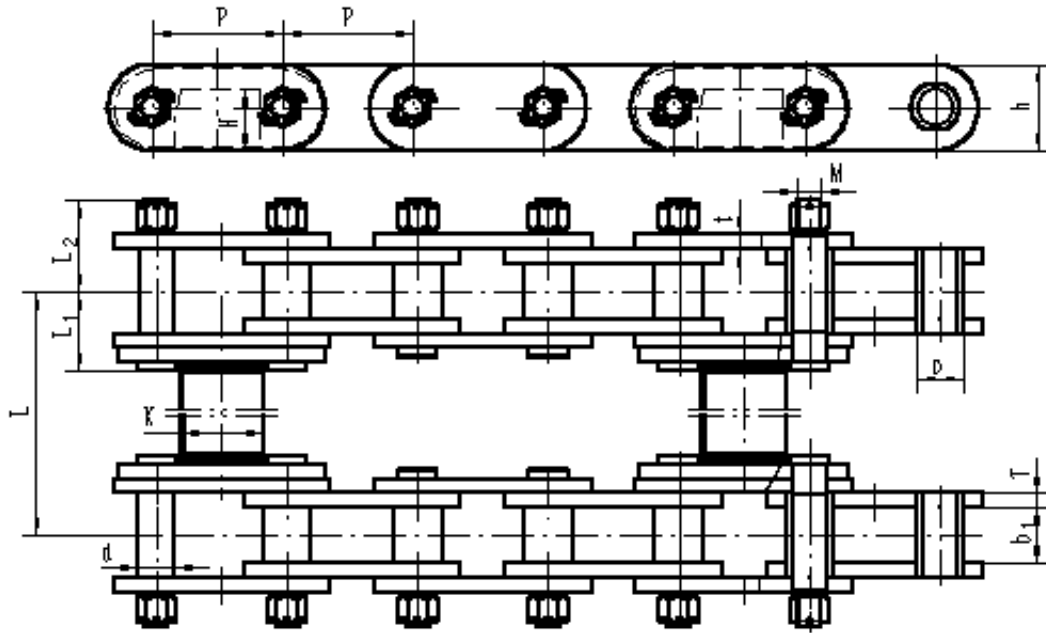


Chain No.	P mm	$b_1(\text{min})$ mm										Q(min) kN
			D mm	d mm	L mm	L_1 mm	L_2 mm	M mm	t/T mm	h mm		
HPT 1535-D2-6P	78.1	34.75	31.75	19.05	90.3	42.91	76.6	3/4-10NC	9.5	44.5	223	

HENGJIU

Q_{\min} KN = Ultimate tensile strength



Chain No.	P mm	b 1 mm											Q(min) kN
			D mm	d mm	M mm	L1 mm	L2 mm	t/T mm	h mm	K mm	H mm	L mm	
A5212	200	83	74	54	36	124.5	141.5	22	132	130	93	2300	2000
B7250	250	83	80	60	42	134.8	157.6	25.4	150	150	105	3000	4000

Q_{\min} KN = Ultimate tensile strength