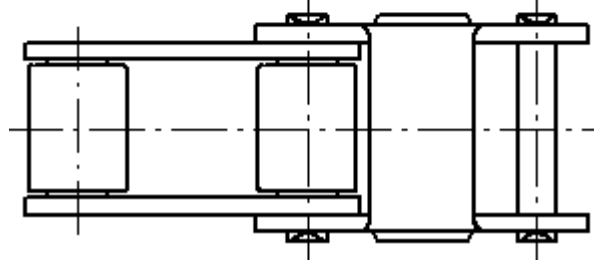
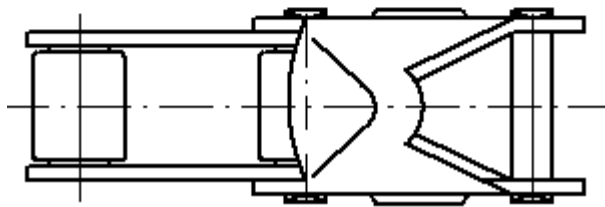
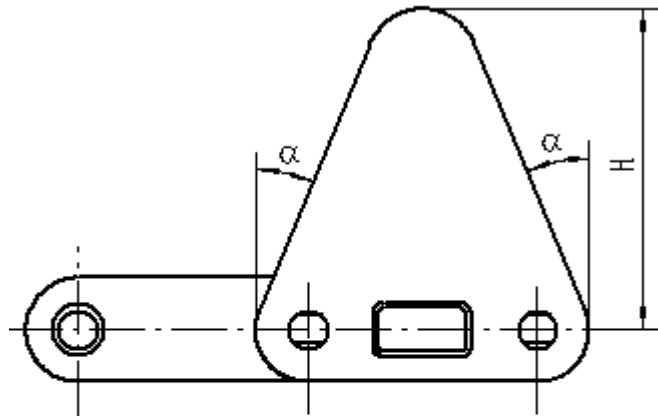
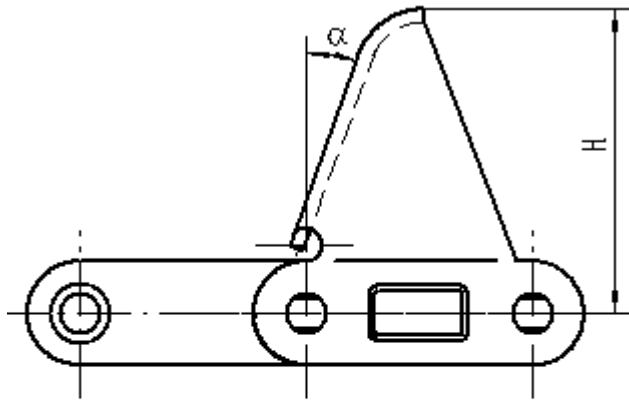




HENGJIU

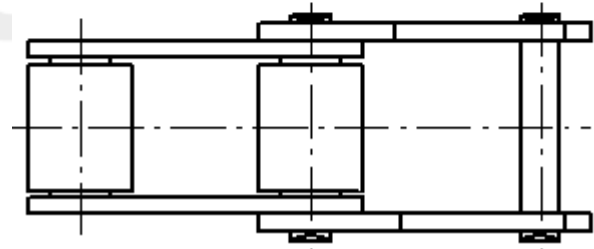
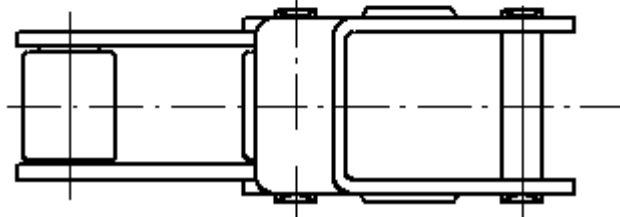
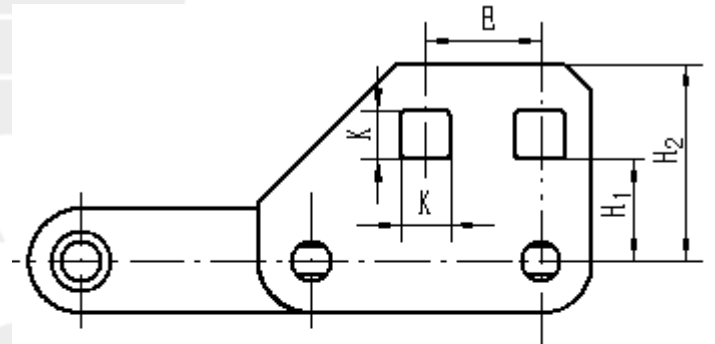
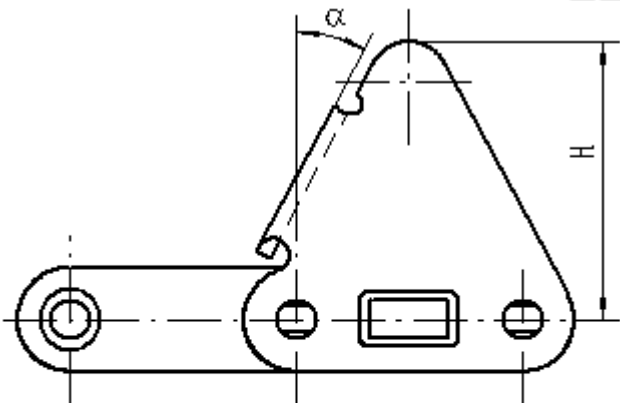
Transmit Safety & Reliability

CA Series Agricultural Roller Chains - Attachments



Type	Chain No.	α	H mm
C6E	CA550	20°	55.6

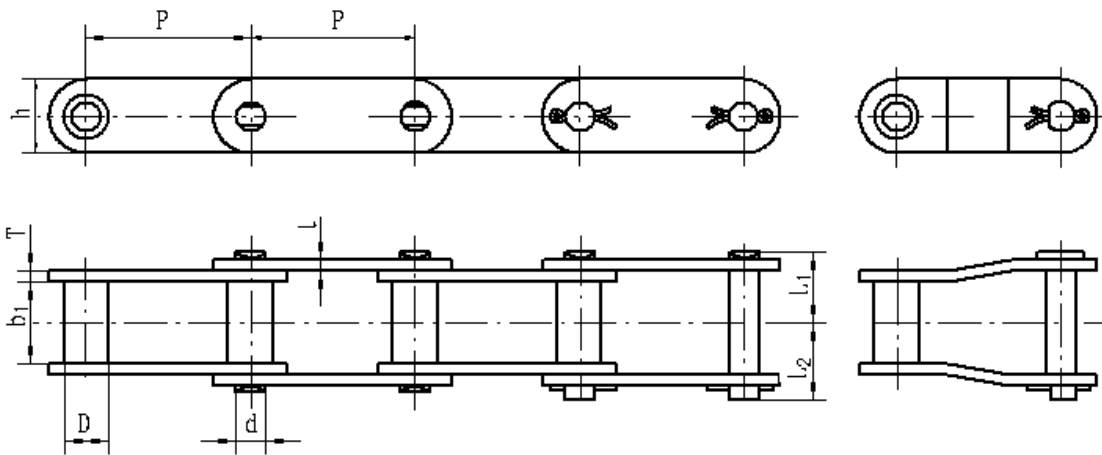
Type	Chain No.	α	H mm
C30E	CA620	22.5°	58.7



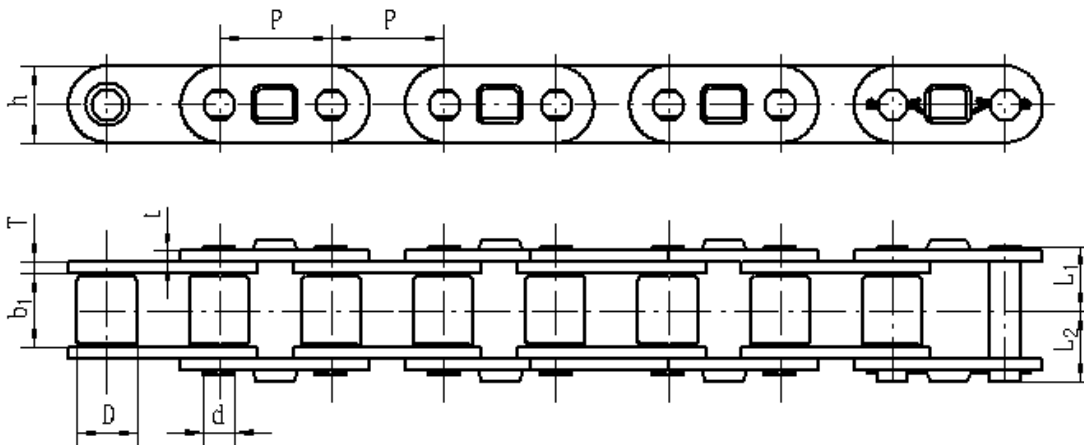
Type	Chain No.	α	H mm
C30E	CA550	28°	50.8

Type	Chain No.	H ₁ mm	H ₂ mm	E mm	K mm
BH	CA620	18.6	36	21	9

CA Series Agricultural Roller Chains



Chain No.	P mm	b ₁ (min) mm	D(max) mm						Q(min) kN	Q ₀ kN	q kg/m
				d mm	L ₁ mm	L ₂ mm	h mm	t/T mm			
CA395	38.4	19	10.38	6.92	16.7	19.5	17.2	2.62	36	42	1.30



Chain No.	P mm	b ₁ (min) mm	D(max) mm						Q(min) kN	Q ₀ kN	q kg/m
				d mm	L ₁ mm	L ₂ mm	h mm	t/T mm			
CA2801	30	19.05	15.88	8.28	17.65	20.65	20.5	3	52.9	60	2.47
CA555	41.4	12.7	16.7	7.16	14.65	17.45	19.05	3.2	56	56.5	1.82

Q_{min} kN = Ultimate tensile strength

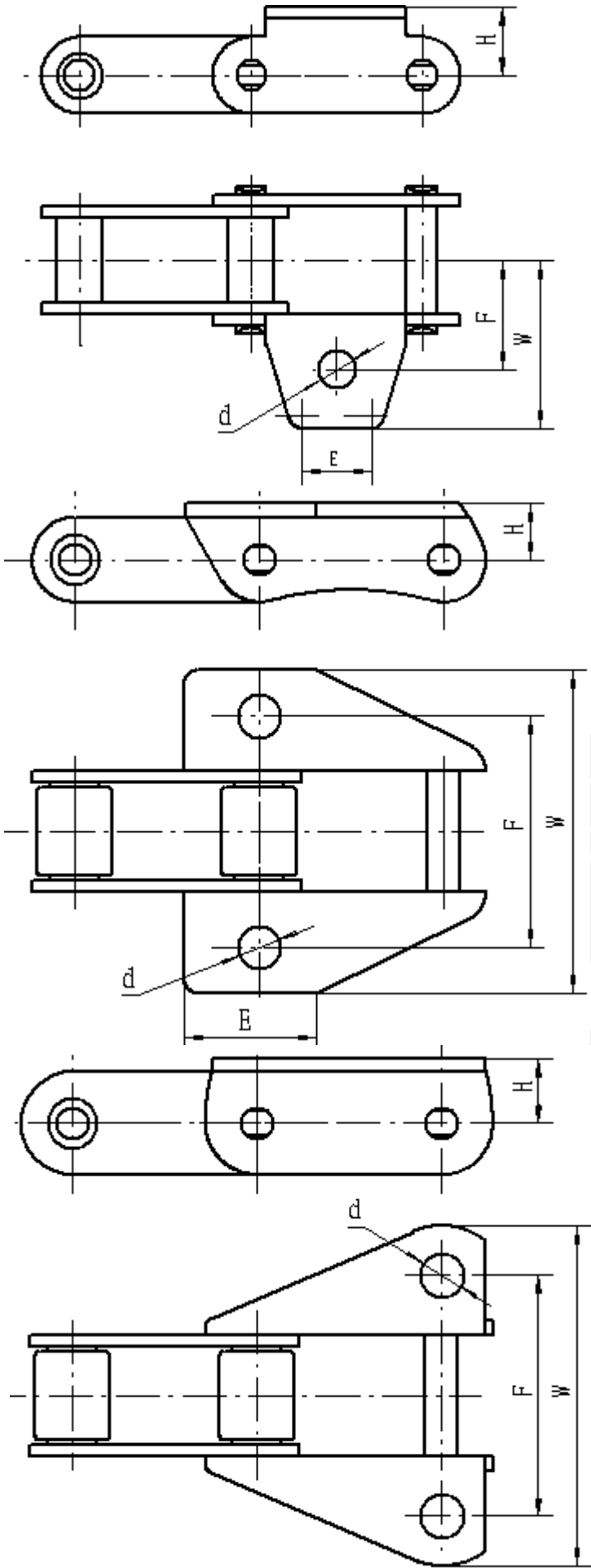
Q₀ kN = Average tensile strength



HENGJIU

Transmit Safety & Reliability

CA Series Agricultural Roller Chains - Attachments



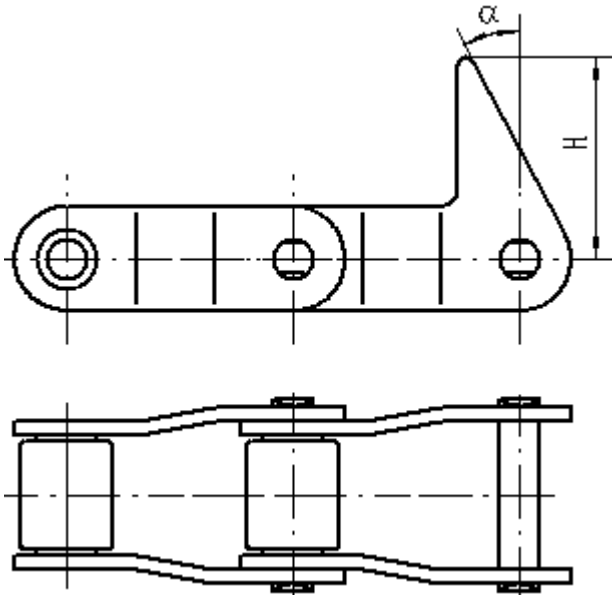
Type	Chain No.	F mm	d mm	W mm	E mm	H mm
R42	CA395	29	8.5	42	15.4	15.5

Type	Chain No.	F mm	d mm	W mm	E mm	H mm
K39M	CA550	50.8	9.8	71.4	29.5	12.7
K39M	CA557	50.8	9.8	71.4	29.5	12.7
K39M	A557	56.7	10.1	77.8	29.5	13.5
K39A	CA557	57	10.5	78	34	13.85

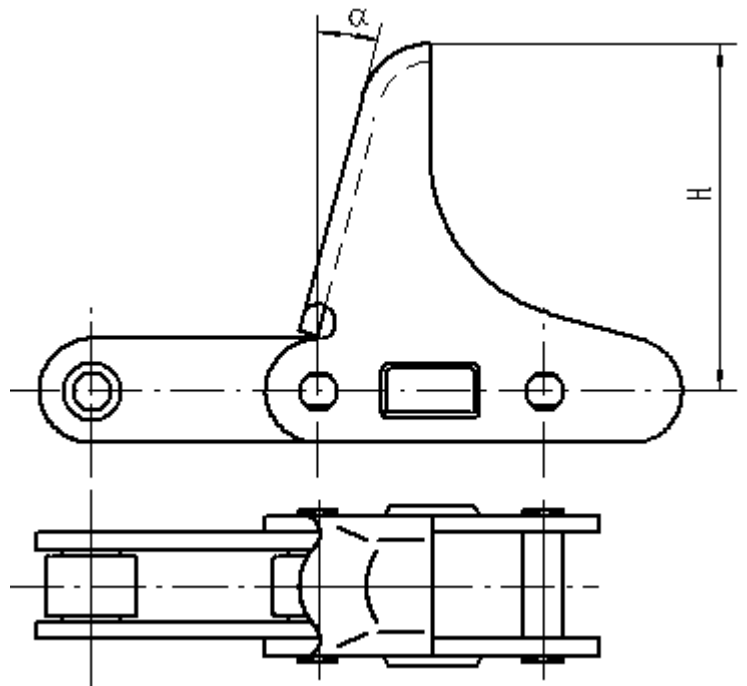
Type	Chain No.	F mm	d mm	W mm	H mm
BK ₁ ·N ₁	CA557	53.95	9.9	76.2	14.75

GJIU

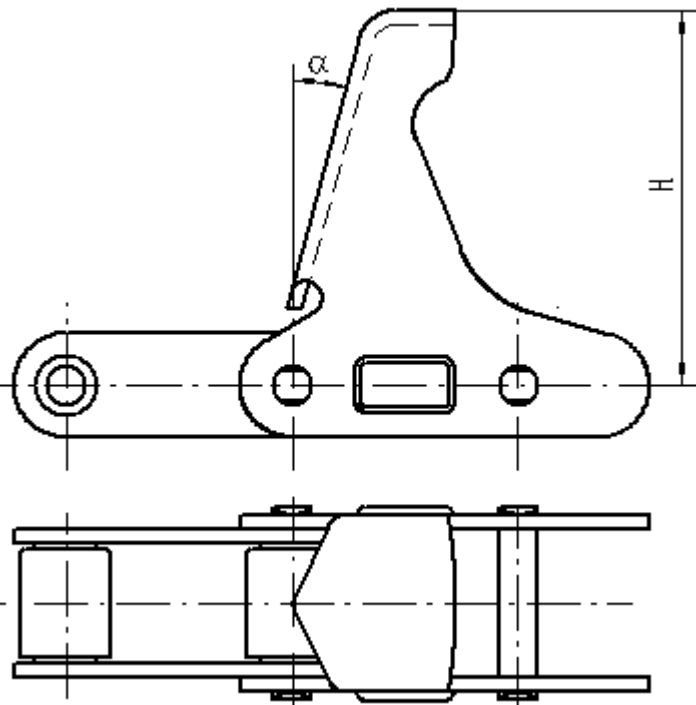
CA Series Agricultural Roller Chains-Attachments



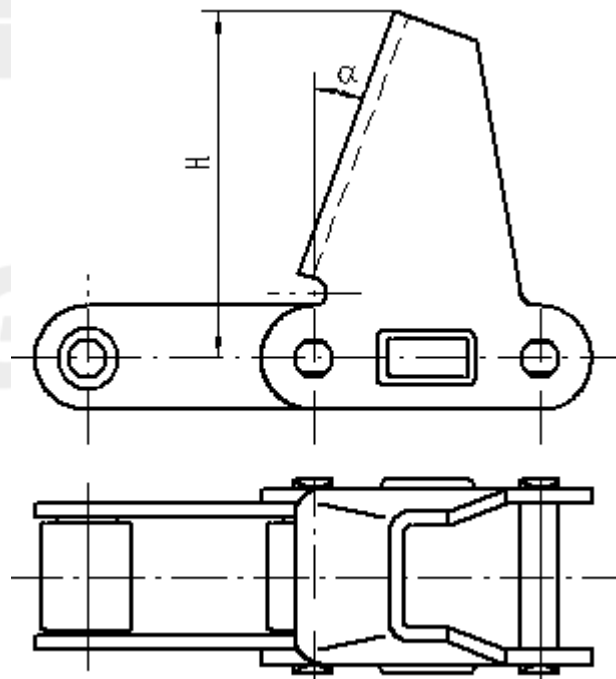
Type	Chain No.	α	H mm
N _i	CA550 OL	28°	41.27



Type	Chain No.	α	H mm
C6E	CA555	15°	63.5
DMO3	CA550H	15°	65

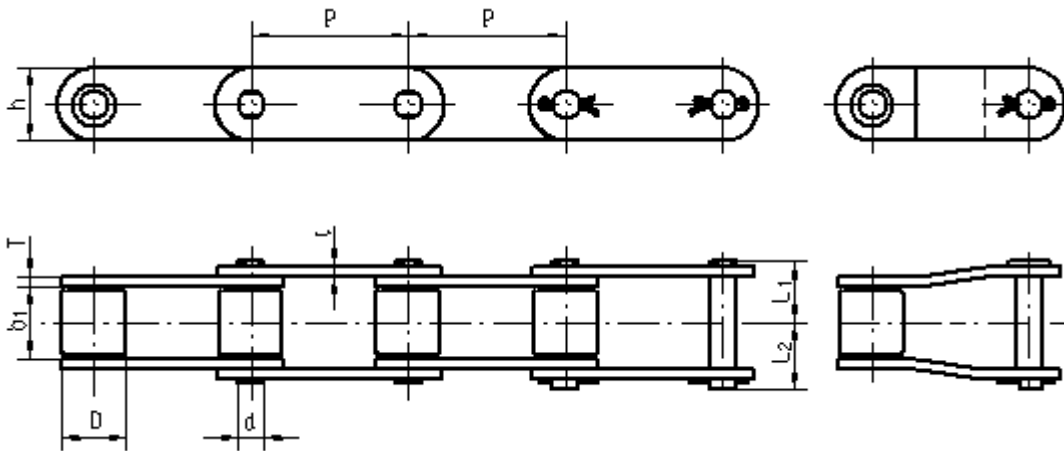


Type	Chain No.	α	H mm
LV41N	CA550	15°	68.5



Type	Chain No.	α	H mm
CPE	CA550	20°	63.5

CA Series Agricultural Roller Chains



Chain No.	P mm	b_1 (min) mm	D(max) mm						Q(min) kN	Q ₀ kN
				d mm	L ₁ mm	L ₂ mm	h mm	t/T mm		
*CA550	41.4	20.1	16.7	7.16	17.25	20.05	19.05	2.62	39.1	48.5
CA550/45	41.4	20.1	15.24	7.16	17.25	20.05	19.05	2.62	39.1	48.5
CA550/55	41.4	20.1	17.78	7.16	17.25	20.05	19.05	2.62	39.1	48.5
CA550/S55	41.4	21.9	17.78	7.16	18.15	20.95	19.05	2.62	39.1	48.5
CA550H	41.4	20.1	16.7	7.16	18.15	20.95	19.05	3	45	54.5
CA550V	41.4	19.05	16.7	8.28	17.65	20.65	20	3	50	58
CA557	41.4	20.1	17.8	7.92	18.55	21.15	23.1	3.2	55.6	70
CA645Z	41.4	22.2	17.78	8.28	21.2	23.9	21.2	4	52.9	73.5
CA624	38.4	19.05	15.88	8.28	17.65	20.65	20.5	3	52.9	60
*CA620	42.01	24.51	17.91	7.16	20.75	23.45	19.05	3.2	39.1	55

Q_{min} KN = Ultimate tensile strength

Q₀ kN = Average tensile strength

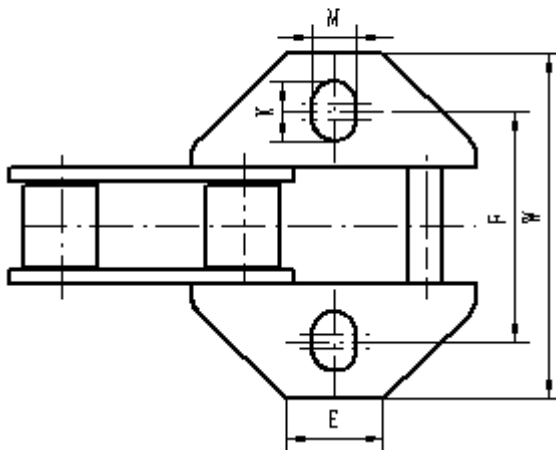
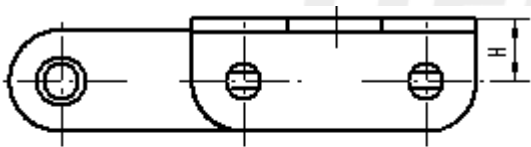
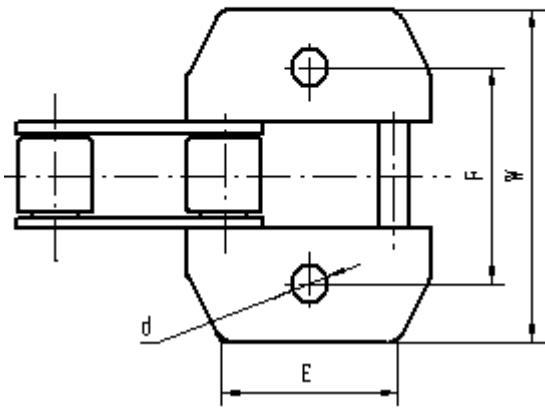
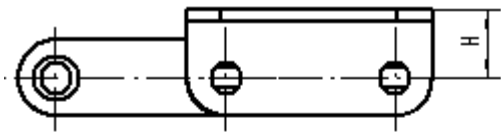
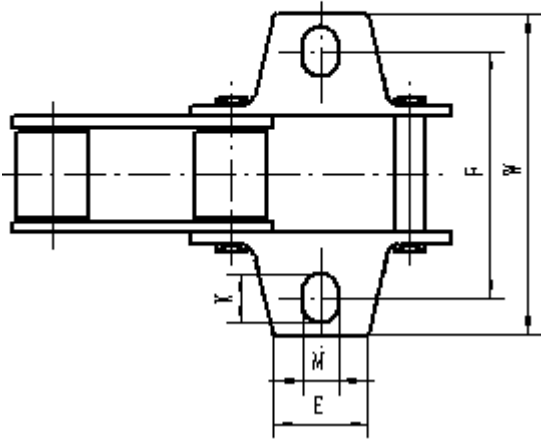
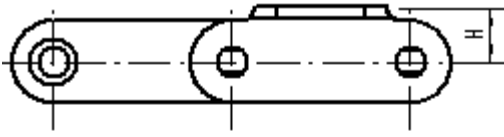
* Chains: There are two kinds of materials for their component parts, which are carbon steel and stainless steel.



HENGJIU

Transmit Safety & Reliability

CA Series Agricultural Roller Chains - Attachments

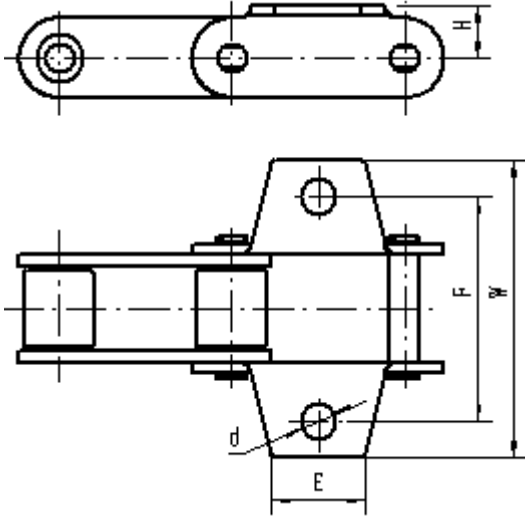


Type	Chain No.	F mm	M mm	K mm	W mm	E mm	H mm
BK ₁	CA550	54	8.35	11.5 5	71.4	22.2	12.7
K30		50.8	8.33	11.5 5	71.4	22.2	12.7

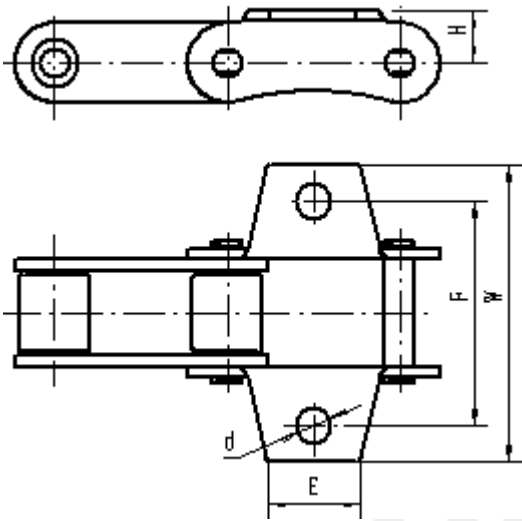
Type	Chain No.	F mm	d mm	W mm	E mm	H mm
220B	CA550V	54	8.7	76.2	30	12.7
BK ₁	CA624V	56.8	10.5	81.7	38	16

Type	Chain No.	F mm	M mm	K mm	W mm	E mm	H mm
BK ₁₃	CA557	53	10	13.5	79	22	14
220BH	CA550V	52.6	8.3	10.2	76.2	30	12.7

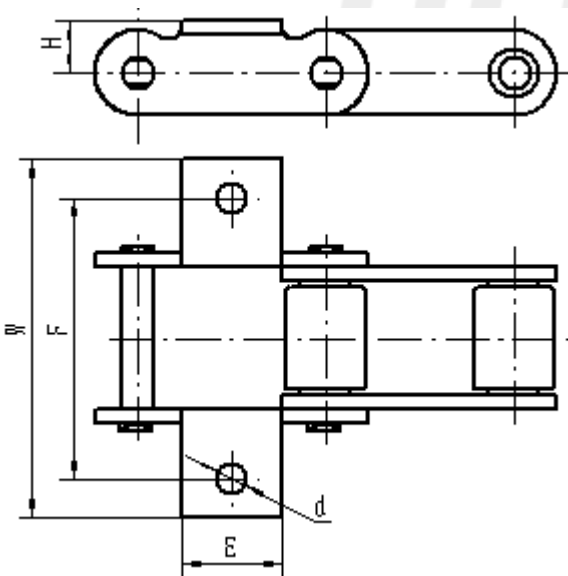
CA Series Agricultural Roller Chains - Attachments



Type	Chain No.	F mm	d mm	W mm	E mm	H mm
BK19	CA550	50.8	6.75	71.4	22.2	12.7
K19	CA550	50.8	9	71.4	22.2	12.7
K29	CA550	54	8.33/10	71.4	22.2	12.7
BK ₁ ·C ₁	CA550	50.8	8.33	71.4	22.2	12.7
BK ₁ ·C ₅	CA550	50.8	8.7	71.4	22.2	12.7
BK ₁ ·C ₇	CA550	54	8.5	71.4	22.2	12.7
BK ₁	CA557	50.8	8.7	72	22	15.9

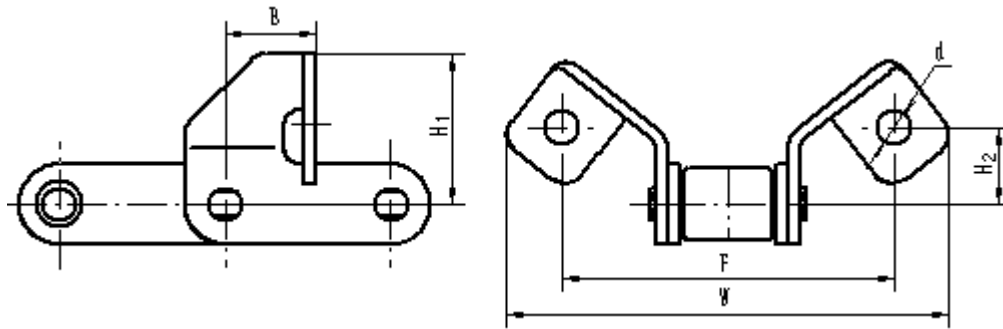


Type	Chain No.	F mm	d mm	W mm	E mm	H mm
BK ₁ ·N ₂	CA550	54	9.9	73.6	22.2	12.7
BK ₁	CA550H	54	8.5	71.8	22.2	12.7

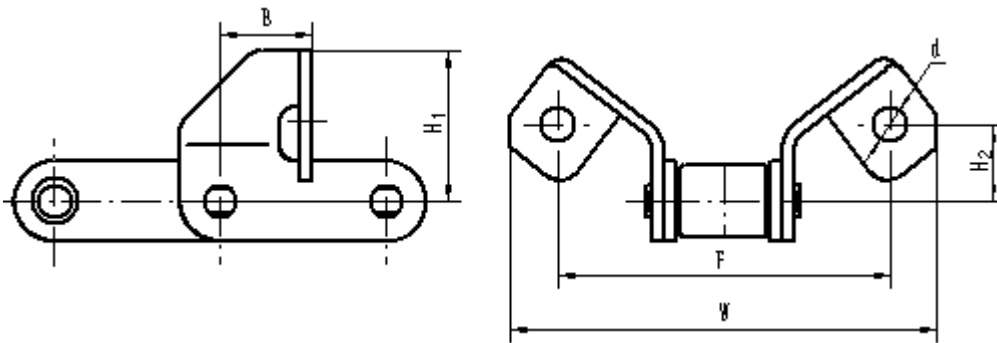


Type	Chain No.	F mm	d mm	W mm	E mm	H mm
BK ₁	CA620	62.7	6.75	80.2	22.2	11.5

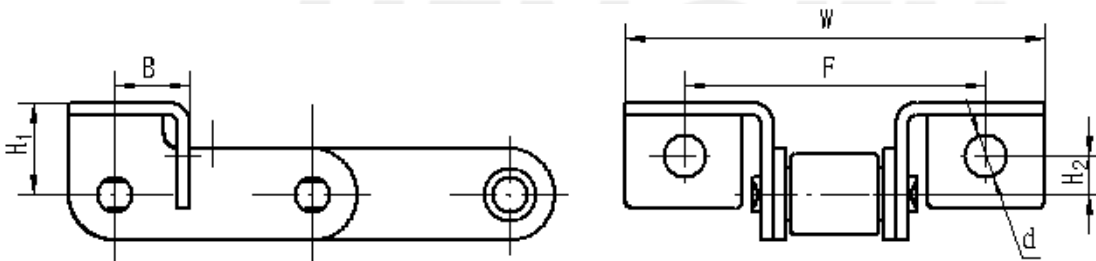
CA Series Agricultural Roller Chains - Attachments



Type	Chain No.	F mm	d mm	W mm	B mm	H ₁ mm	H ₂ mm
AF ₁₄	CA550	79.4	8.33	104.8	20.475	31.75	15.88
F14	CA550	73.4	8.33	104.8	20.475	31.8	15.88

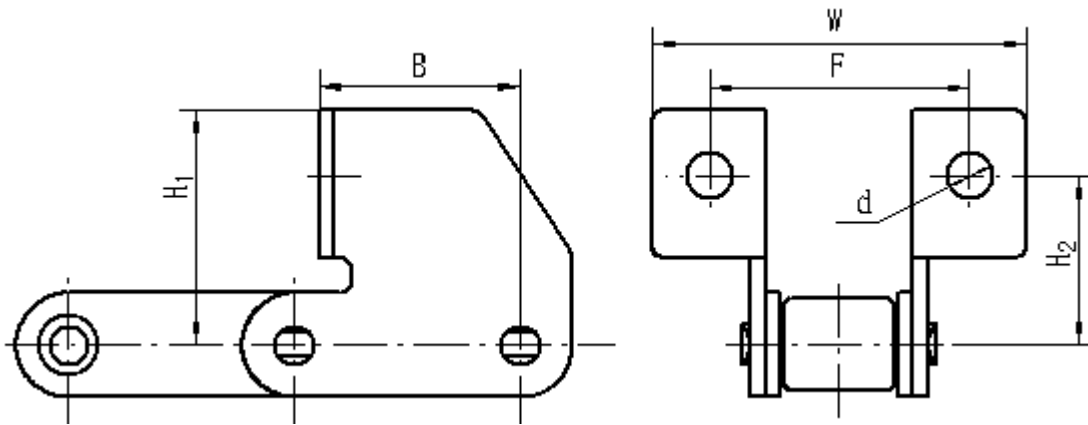


Type	Chain No.	F mm	d mm	W mm	B mm	H ₁ mm	H ₂ mm
F5	CA550V	79.4	9.9	98.4	20.5	31.75	15.9

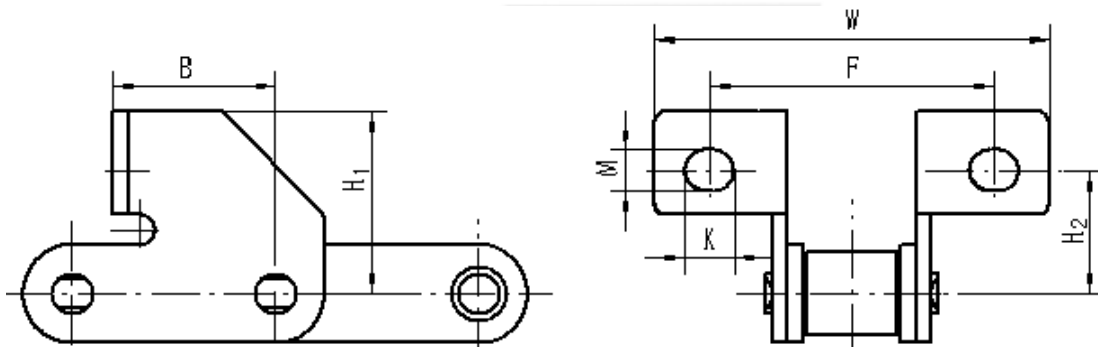


Type	Chain No.	F mm	d mm	W mm	B mm	H ₁ mm	H ₂ mm
G18	CA550	63.5	8.73	88.1	15.875	19.05	7.94

CA Series Agricultural Roller Chains - Attachments



Type	Chain No.	F mm	d mm	W mm	B mm	H ₁ mm	H ₂ mm
F ₄	CA550V	47.6	8.33	68.2	36.9	42.9	31

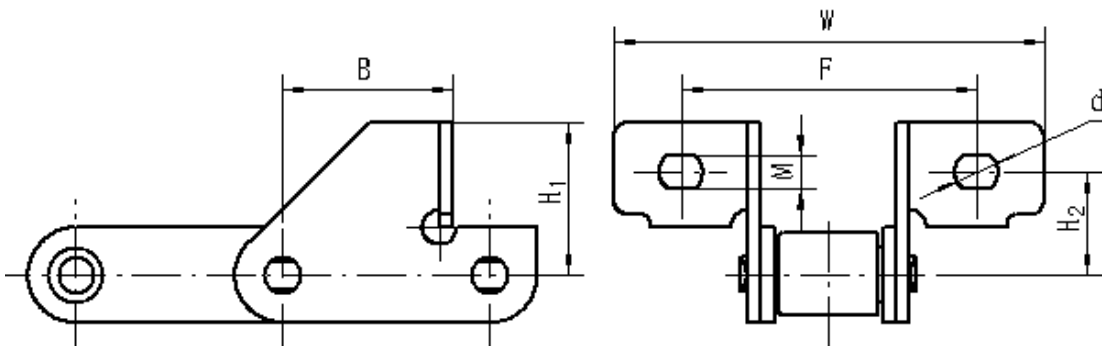


Type	Chain No.	F mm	K mm	M mm	W mm	B mm	H ₁ mm	H ₂ mm
F ₄ T	CA550V	58	10	8.33	80	32	36.9	25

HENGJIU

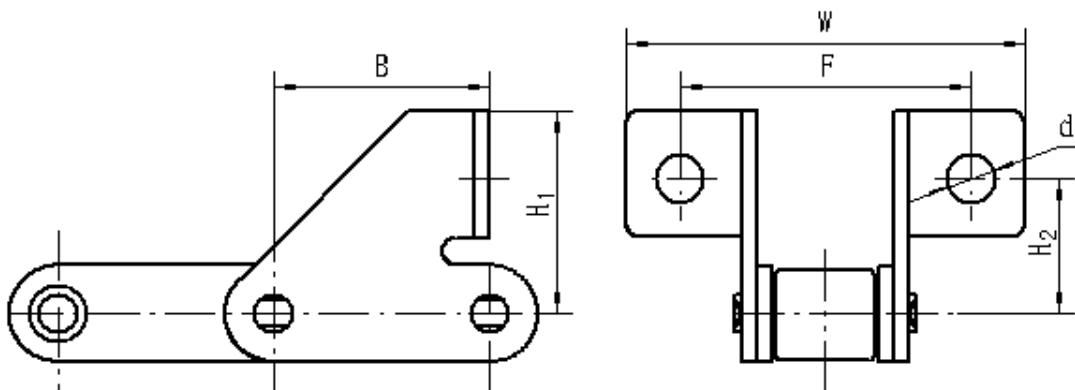
CA Series Agricultural Roller Chains - Attachments

Type	Chain No.	F mm	d mm	W mm	B mm	H ₁ mm	H ₂ mm
F ₄	CA550H	57.5	6.5	84.5	34.9	30.48	20.5



Type	Chain No.	F mm	d mm	M mm	W mm	B mm	H ₁ mm	H ₂ mm
F1U	CA550/S55	60.5	8.7	6.7	87	34	30.48	20.5

Type	Chain No.	F mm	d mm	W mm	B mm	H ₁ mm	H ₂ mm
F ₄ ·N ₁	CA550/55	58	6.8	85	34	30.48	20.5
F ₄ ·N ₄	CA550	58	8.5	85	34	30.48	20.5
F ₄ ·N ₅	CA550	58	6.5	85	34	30.48	20.5
F1H	CA550/S55	62	6.8	89	32.9	30.48	20.5
F45	CA624	51.5	8.5	68	38.4	35	24.5

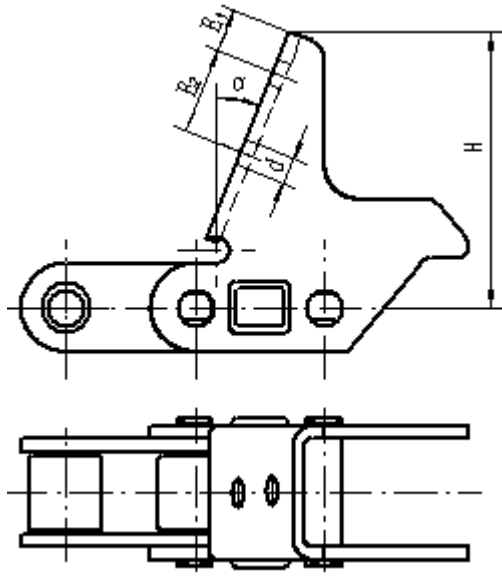
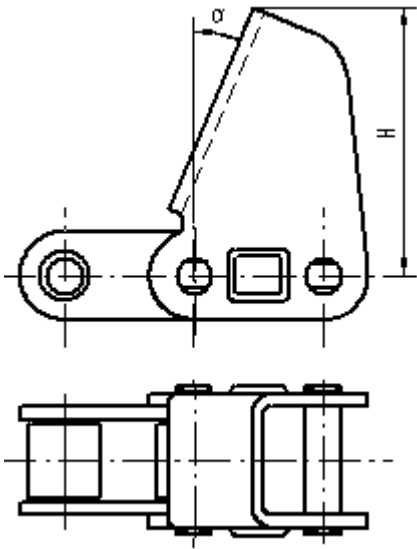




HENGJIU

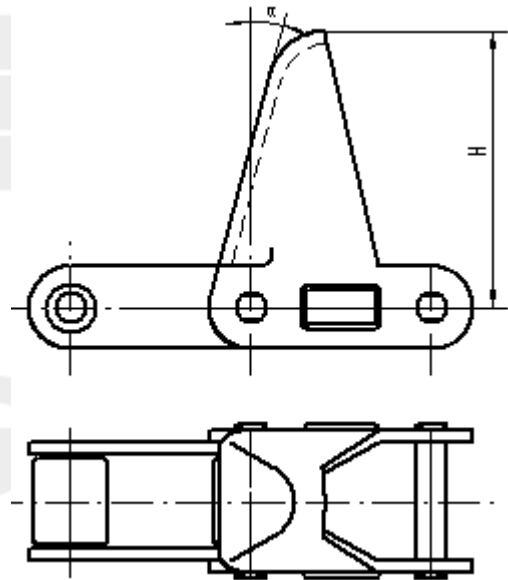
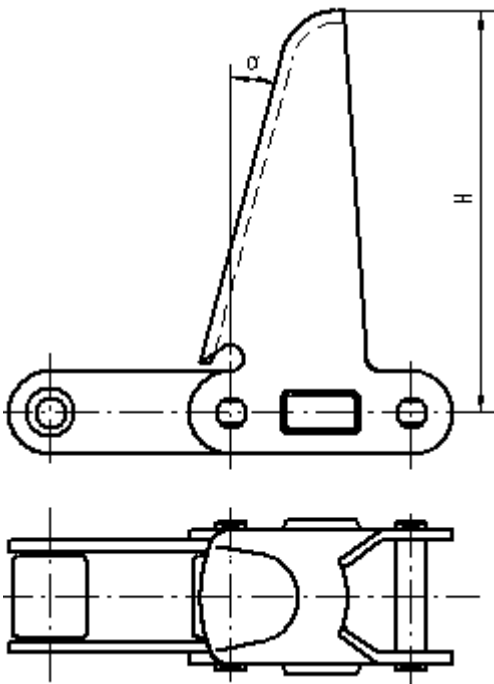
Transmit Safety & Reliability

CA Series Agricultural Roller Chains - Attachments



Type	Chain No.	α	H mm
TM91E	CA2801	22.5°	62.5
TM91E	WCA2801	23°	63.65

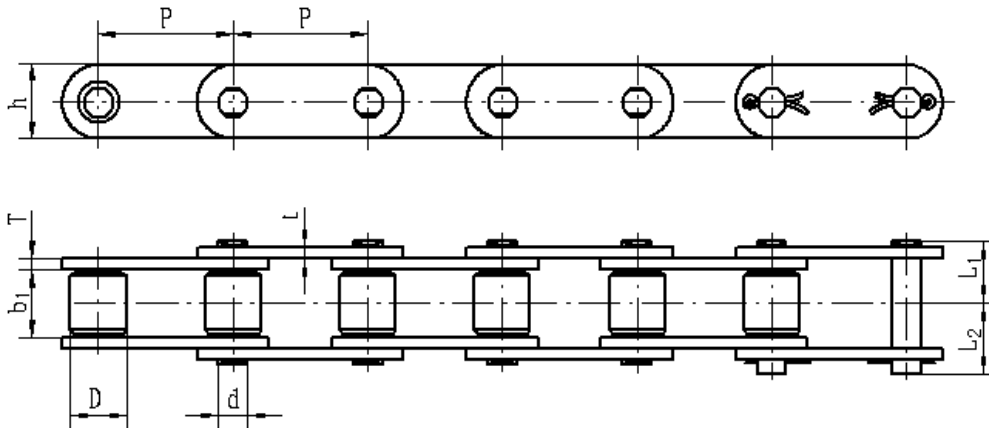
Type	Chain No.	α	H mm	d mm	E ₁ mm	E ₂ mm
C6E	CA2801	22°	63.8	6.3	10	30
			5			



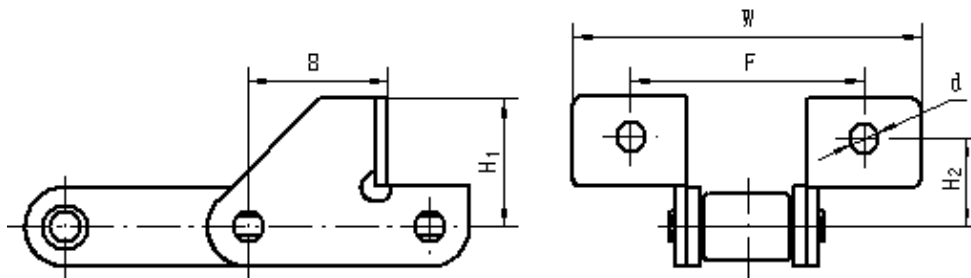
Type	Chain No.	α	H mm
C13E	CA550	15°	92
C13E	CA620	15°	92

Type	Chain No.	α	H mm
C11E	CA550	15°	63.5

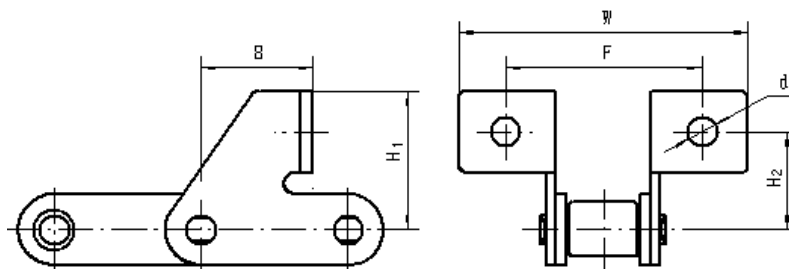
Else Series Agricultural Roller Chains-Attachments



Chain No.	P mm	b ₁ (min) mm	D(max) mm						Q(min) kN	Q ₀ kN	q kg/m
				d mm	L ₁ mm	L ₂ mm	h mm	t/T mm			
384V	38.4	18	15.88	6.92	16.7	19.5	17.2	3	40	46.5	1.83
384R	38.4	19	15.88	6.92	16.7	19.5	17.2	2.62	36	45	1.72
384VB	38.4	19.05	15.88	8.28	17.65	20.65	20.5	3	52.9	63	2.14
384SPL	38.4	19	21	6.92	16.7	19.5	17.2	2.62	36	45	2.28
N381	38.1	22.23	15.88	7.92	19.55	22.23	22	3.2	48	65	2.58
N419	41.91	25.4	19.05	9.52	21.35	24.05	26	3.2	68	78.5	3.5



Type	Chain No.	F mm	d mm	W mm	B mm	H ₁ mm	H ₂ mm
F45	384VB	52	8.4	72	36.4	36	24

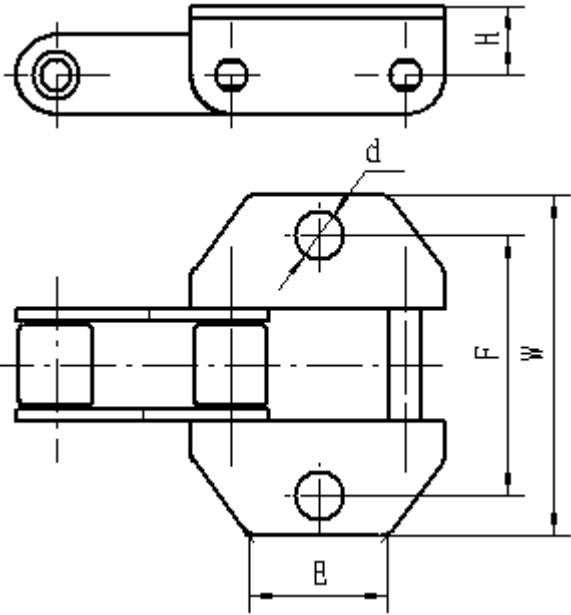


Type	Chain No.	F mm	d mm	W mm	B mm	H ₁ mm	H ₂ mm
F4	384V	52	8.4	71	32.4	34	24
F45	C384B	52	8.4	71	38.4	36	24

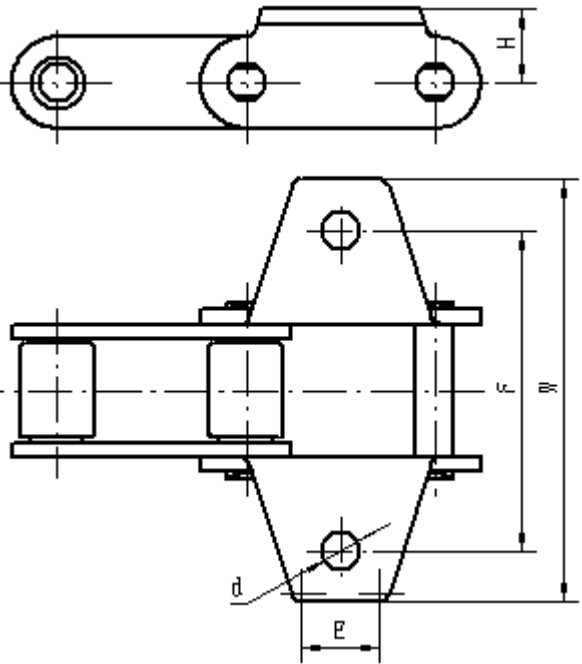
Q_{min} kN = Ultimate tensile strength

Q₀ kN = Average tensile strength

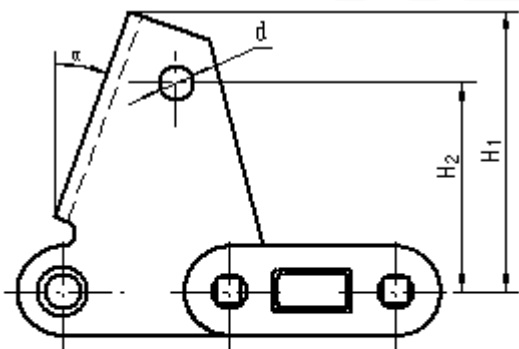
Else Series Agricultural Roller Chains - Attachments



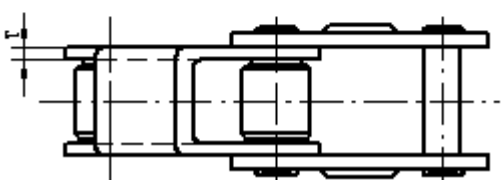
Chain No.	F mm	d mm	W mm	E mm	H mm
384V-BK ₁	57	8.5/10.6	74	30	15.1
384SPL-BK ₁	58	8.5	77	34.1	11.2
384VB-BK ₁	58	10.7	86	40.8	14



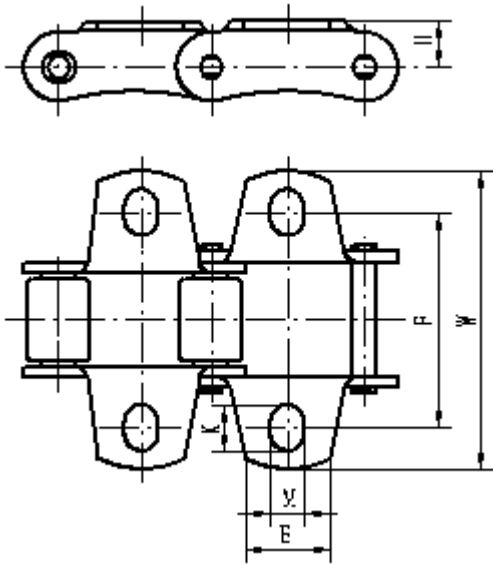
Type	Chain No.	F mm	d mm	W mm	E mm	H mm
220A	384V	57.5	9.1	81	15.7	15.4



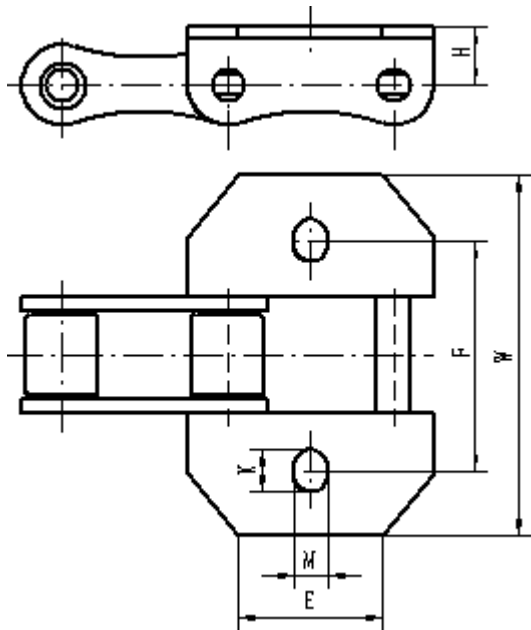
Type	Chain No.	α mm	d mm	T mm	H ₁ mm	H ₂ mm
TM92	384VB	20°	8	3	64.5	48



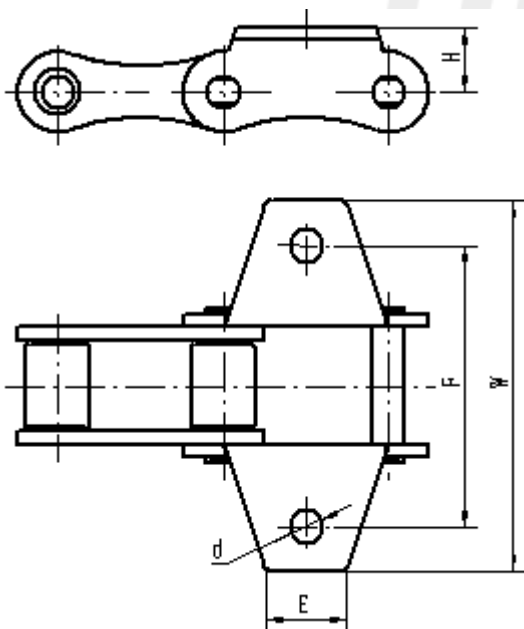
S Series Agricultural Roller Chains-Attachments



Type	Chain No.	F mm	M mm	K mm	W mm	E mm	H mm
BK ₁	S32	42.9	6.5	8.1	60	15	8.6
	S42	54	8.3	12.5	74	18.5	14.0
	S45	54	8.3	11.5	74	21.3	11.4
	S51	51.8	8.5	10	70.2	21	11.4
	S52	58.8	8.5	10	77.2	21	11.4
	S55	54	8.3	11.5	74	21.3	11.4
	S55R	66	8.4	12	92	24.3	16
	S62	66.6	8.5	14.8	95	21.5	11.4
	S77	76.2	8.5	11.5	101	25.4	20.8
	S88	96.8	8.5	10	119	32	20.8



Type	Chain No.	F mm	M mm	K mm	W mm	E mm	H mm
220B	S55V	57.5	8.5	10.5	90	36	14.5
220D		55	8.5	10.5	90	36	14.5



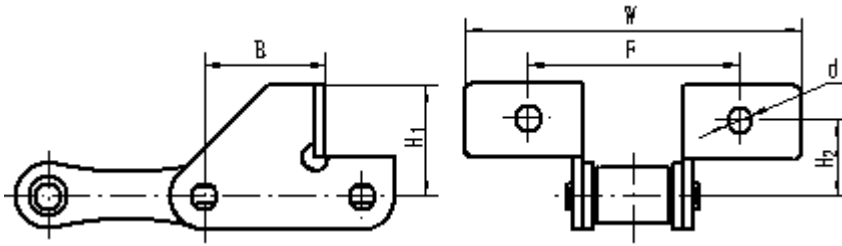
Type	Chain No.	F mm	d mm	W mm	E mm	H mm
BK ₁ ·C ₁	S413	70.5	8.4	93	20	16



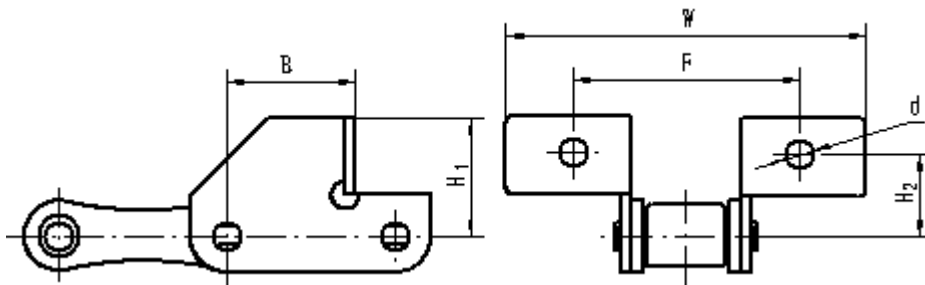
HENGJIU

Transmit Safety & Reliability

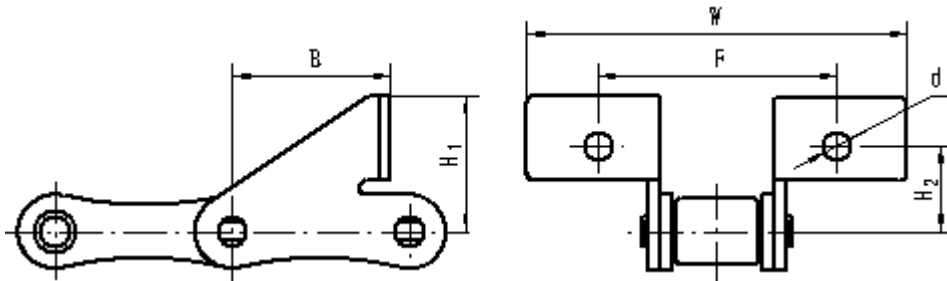
S Series Agricultural Roller Chains-Attachments



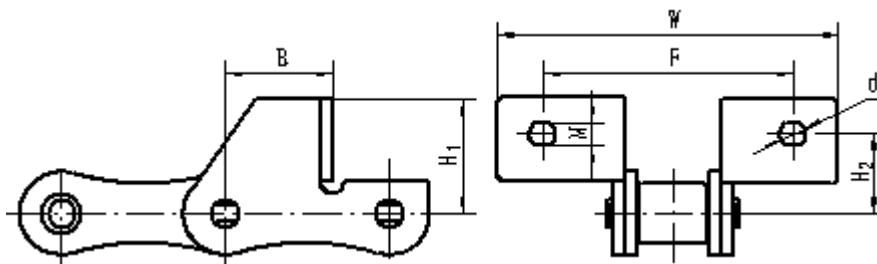
Type	Chain No.	F mm	d mm	W mm	B mm	H ₁ mm	H ₂ mm
F ₁	S45	58	6.7	91	31.9	29	20
F ₁ ·N ₃		62	8.5	91	31.9	29	20
F81		58	8.5	91	31.9	29	20



Type	Chain No.	F mm	d mm	W mm	B mm	H ₁ mm	H ₂ mm
F ₁	S55	62	6.5	89.2	31.9	29	19
F ₁ ·N ₁		62	6.7	89.2	31.9	29	19
F ₁ ·N ₂		58	6.7	91	31.9	29	20
F ₁ ·N ₄		62	8.5	92	31.9	17.5	32.5

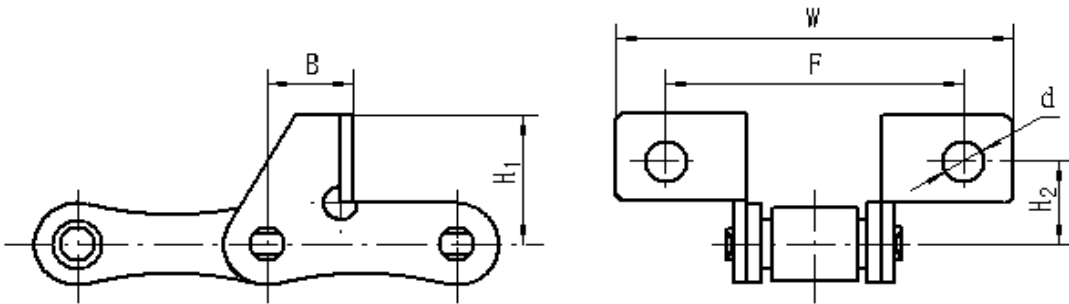


Type	Chain No.	F mm	d mm	W mm	B mm	H ₁ mm	H ₂ mm
F ₄	S55	58	6.6	86	37	31.8	20
	S55V	54.5	6.5	84	31.4	39	25
	S413	60	8.4	79.3	37	45	25

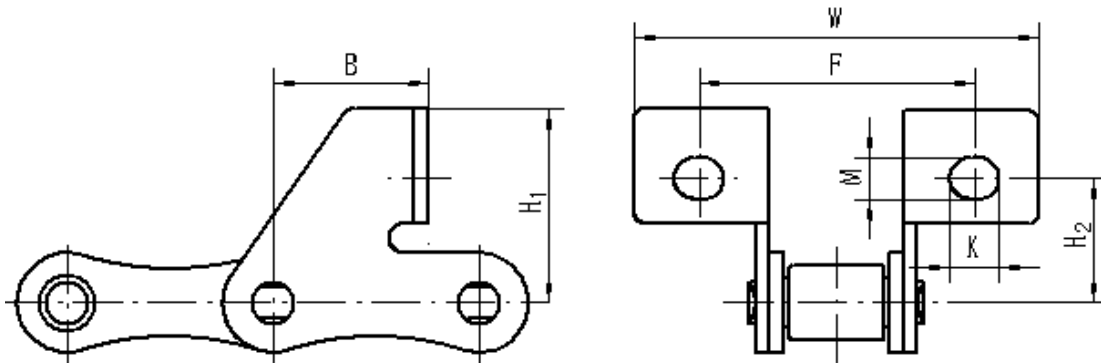


Type	Chain No.	F mm	d mm	M mm	W mm	B mm	H ₁ mm	H ₂ mm
F ₄	S45V	64.4	10	8.5	89	27.2	29.5	18.7
	S52LV	56.2	10	8.5	88	19.05	29.2	20

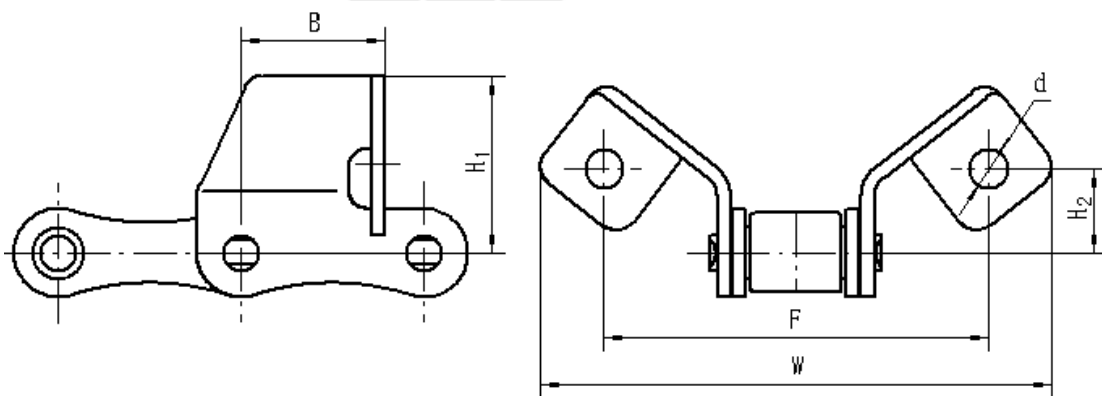
S Series Agricultural Roller Chains - Attachments



Type	Chain No.	F mm	d mm	W mm	B mm	H ₁ mm	H ₂ mm
F ₁	S52	62	8.5	82	17.5	27	17.5
F ₄	S45	62.4	8.5	83	25	34	22

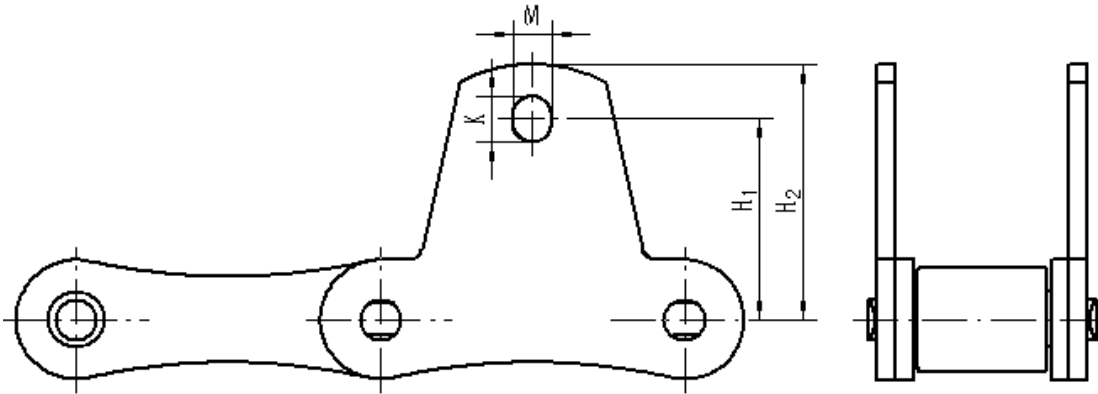


Type	Chain No.	F mm	K mm	M mm	W mm	B mm	H ₁ mm	H ₂ mm
F ₄ ·N ₃	S55V	58	10	8.33	84	31.4	39	25

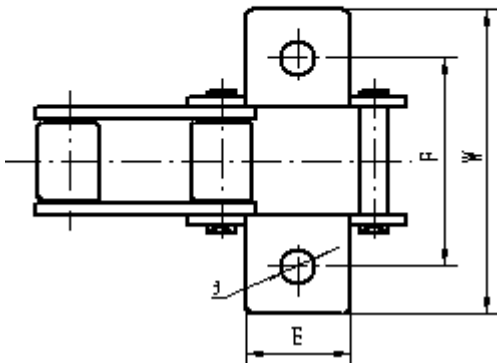
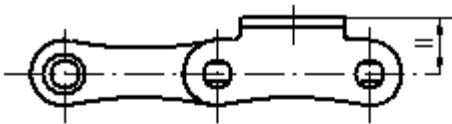


Type	Chain No.	F mm	d mm	B mm	H ₁ mm	H ₂ mm	W mm
F ₁ ·N ₁	S55V	87.2	8.5	32.5	39.7	19	119.5
F ₁₄	S45	62	8.5	28.6	28	15	86
nF ₁₄	S45	62	8.5	24	27	12	87

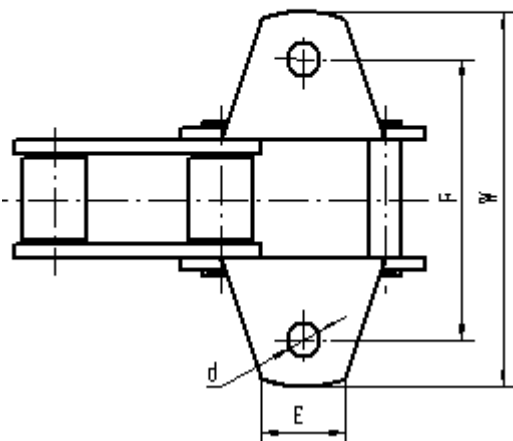
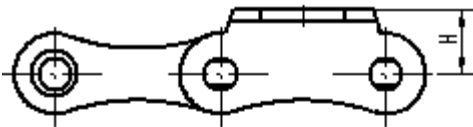
S Series Agricultural Roller Chains-Attachments



Type	Chain No.	H ₁ mm	H ₂ mm	M mm	K mm
BH ₁	S88	43.7	55.6	8.5	10
	S32	16.5	25.1	6.5	8.1

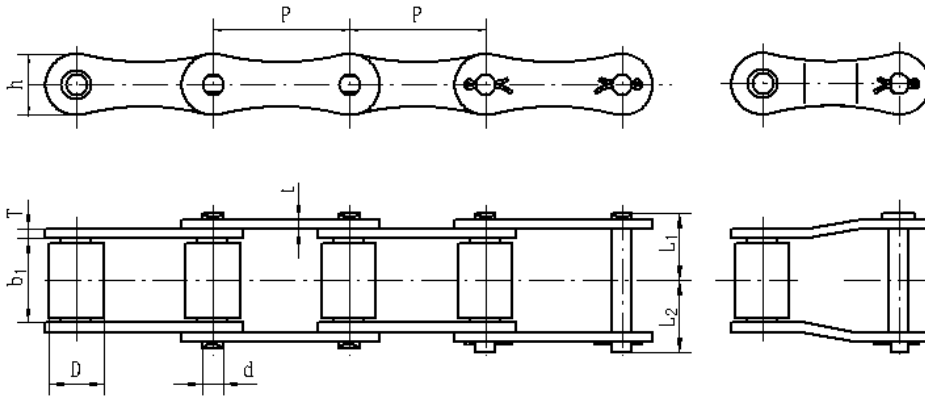


Type	Chain No.	F mm	d mm	W mm	E mm	H mm
C ₁	S45	50.8	7.3	74	21.3	11.4
C ₃		50.8	8.3	74	21.3	11.4



Type	Chain No.	F mm	d mm	W mm	E mm	H mm
Nr220	S52LV	50	8.5	74	26	14
220		50	9.5	74	26	15

S、A series Agricultural Roller Chains



Chain No.	P mm	b ₁ (min) mm	D(max) mm						Q(min) kN	Q ₀ kN	q kg/m
				d mm	L ₁ mm	L ₂ mm	h mm	t/T mm			
*S32	29.21	16.25	11.43	4.45	13.35	15.65	13.4	1.8	8	21	0.92
S42	34.93	19.76	14.27	7.01	17.1	20	19.7	2.62	26.7	48	1.84
S45	41.40	22.95	15.24	5.74	18.45	20.45	17.2	2.62	17.8	35	1.59
S51	38.1	16	15.24	5.74	15	17	17.2	2.62	17.8	35	1.42
S52	38.1	22.95	15.24	5.74	18.45	20.45	17.2	2.62	17.8	35	1.78
S52LV	38.1	18.2	15.2	6.92	16.7	19.5	16.3	2.62/3	30	40	1.52
*S55	41.4	22.95	17.78	5.74	18.45	20.45	17.2	2.62	17.8	35	1.87
*S62	41.91	26.1	19.05	5.74	20	22.1	17.2	2.62	26.7	35	2.17
S77	58.34	22.7	18.26	8.92	21.65	25.15	25.8	4	44.5	72	2.69
*S88	66.27	28.58	22.86	8.92	24.85	28.35	26	4	44.5	72	3.22
S88-N ₁	66.27	28.58	30	8.92	24.85	28.35	26	4	44.5	72	4.22
S413	41.3	21.4	16	8.28	19.55	22.85	20	3.2	42	58	2.04
S414	41.4	22.23	17.9	8.28	19.55	22.85	20	3.2	42	58	2.24
S414-N ₁	41.4	22.23	17.78	8.28	19.55	23.65	20	3.2	45.4	58	2.22
S41.91	41.91	19.4	17	7.92	18.7	21.3	24.5	3.2	67	70	2.34
A550	41.4	20.1	16.70	7.16	17.25	20.05	19.05	2.62	39.1	48.5	1.78
A557	41.4	20.1	17.78	7.92	18.55	21.15	23.1	3.2	55.6	70	2.46
A620	42.01	24.51	17.91	7.16	20.75	23.45	19.05	3.2	39.1	55	2.29

Q_{min} KN = Ultimate tensile strength

Q₀ KN = Average tensile strength

* Chains: There are two kinds of materials for their component parts, which are carbon steel and stainless steel.